

Parkfield

Lot 111, Rochfort Street



\$435,585



LAND SIZE
562m²

LOT FRONTAGE
7.2m

LOT DEPTH
39.3m

House Key Features:

- Fixed site and footing costs!
- Developer & council requirements
- Render to façade, external lights
- Upgraded bricks, flat roof tiles
- Quality laundry & kitchen joinery
- Timber finish floating floor
- Portland facade
- Led downlights, nbn ready
- Full stormwater system
- Ducted r/c heating & cooling

Land Key Features:

- Fully titled
- Benched and ready to build your home on
- Elevated position with stunning views
- Moments to Newenham linear park & creek
- Easy 2km walk to Mount Barker
- Backs on to a beautiful reserve

HOUSE PRICE

\$220,585

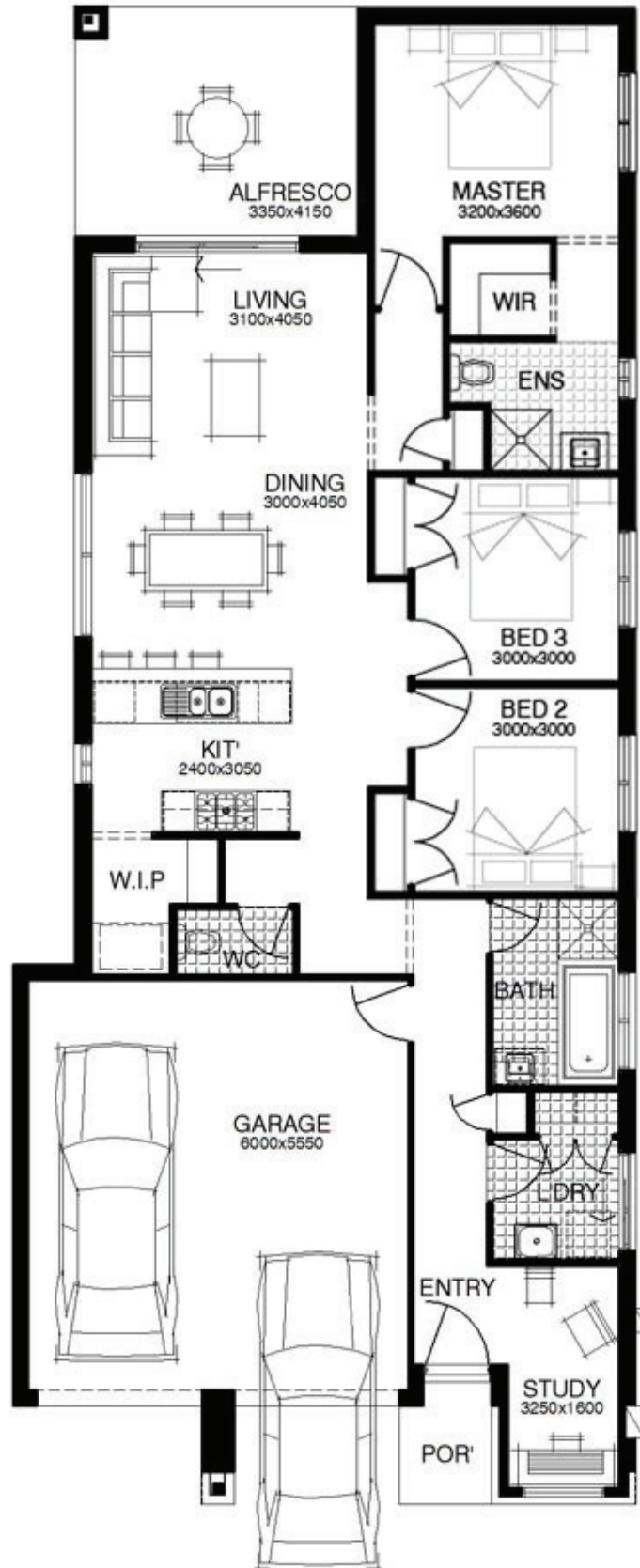
LAND PRICE

\$215,000

Contact: Ben Walker ben@newenham.com.au
0429 107 497 RLA 63301

Visit our Sales & Info Centre:
164 Flaxley Rd Mt. Barker

Open 12 – 5pm daily
newenham.com.au



Disclaimer: This email and any files transmitted with it are confidential and intended solely for the use of the individual or entity to whom they are addressed. If you have received this email in error, please notify the sender and delete this e-mail from your system. If you are not the intended recipient you are notified that disclosing, copying, distributing or taking any action in reliance on the contents of this information is strictly prohibited. No representation is made that this email or its attachments are free of errors, virus, interception or interference. The company accepts no liability for any damage caused by any virus transmitted. Any views or opinions are solely those of the author and do not necessarily represent those of the Company.

Contact: Ben Walker ben@newenham.com.au
0429 107 497 RLA 63301

Visit our Sales & Info Centre:
164 Flaxley Rd Mt. Barker

Open 12 – 5pm daily
newenham.com.au