

# McLaren 236

## Lot 111, Rochfort Street



**rivergum**  
homes

**\$464,976**



LAND SIZE  
**562m<sup>2</sup>**

LOT FRONTAGE  
**12.4m**

LOT DEPTH  
**47.9m**

### House Key Features:

- Fixed price footings and siteworks
- 2700 ceilings
- Stone bench tops / overhead cupboards
- Built in robes
- Roller blinds / downlights
- RC air-con
- Perimeter path / alfresco slab and driveway concrete
- Alfresco slab
- NBN ready
- Boundary build requirements
- Bushfire allowance

### Land Key Features:

- Fully titled
- Benched and ready to build your home on
- Elevated position with stunning views
- Moments to Newenham linear park & creek
- Easy 2km walk to Mount Barker
- Backs on to a beautiful reserve

HOUSE PRICE

**\$249,976**

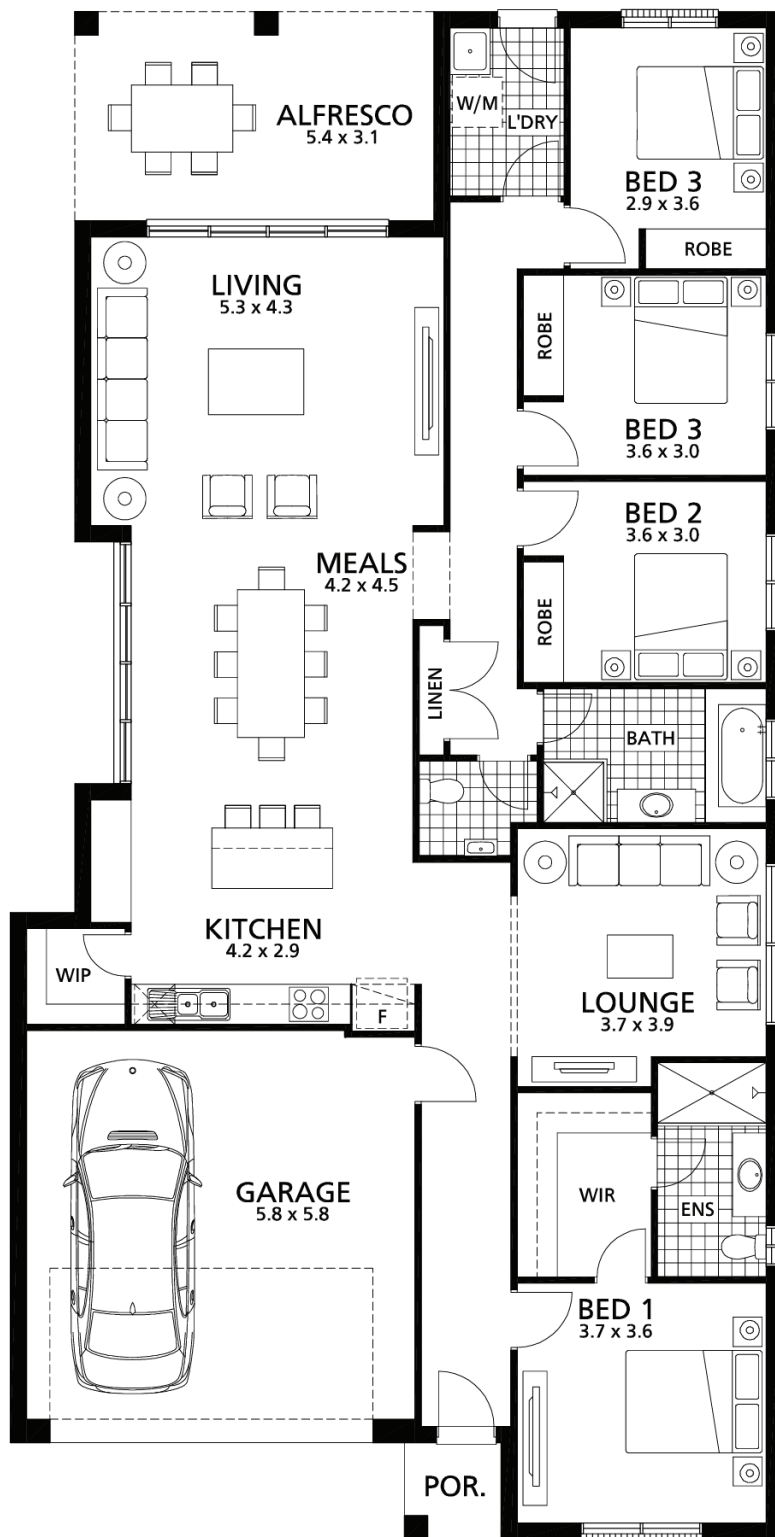
LAND PRICE

**\$215,000**

Contact: Ben Walker  
ben@newenham.com.au  
0429 107 497 RLA 63301

Visit our Sales & Info Centre:  
164 Flaxley Rd Mt. Barker

Open 12 – 5pm daily  
newenham.com.au



© 2017 Rivergum Homes Pty Ltd. Subject to availability. All plans are copyright. All images and plans shown are for illustrative purposes only. Floorplans will vary according to façade type and all sizes are approximate. Rivergum Homes reserves the right to alter designs and pricing without notice. All prices are GST, council approval and energy efficiency assessment. Conditions apply. E&OE. SA Builder's Licence GL113681. ABN 70 065 466 337. Land component sale by Sexton Glover Watts RLA 63301. \*Refer website for T&C's †Visit [www.revenuesa.sa.gov.au](http://www.revenuesa.sa.gov.au) to check your eligibility for the First Home Owner Grant.

Contact: Ben Walker ben@newenham.com.au  
0429 107 497 RLA 63301

Visit our Sales & Info Centre:  
164 Flaxley Rd Mt. Barker

Open 12 – 5pm daily  
newenham.com.au