

# Viridian Lot 125, Burton Street



rivergum  
homes

**\$438,514**



LAND SIZE  
**760m<sup>2</sup>**

LOT FRONTAGE  
**17m**

LOT DEPTH  
**36m**

## House Key Features:

- 18 week build time guarantee
- Generous site works and footings allowance
- 2 coat internal paint system
- Quality fixtures & fittings, chrome mixer taps throughout
- Instantaneous gas hot water system
- R4.0 ceiling insulation, R2.0 external wall insulation
- Automatic panel lift door
- Built-in robes to bedrooms
- Overheads to kitchen with canopy rangehood
- Stainless steel appliances
- Ducted reverse cycle air-conditioning
- Timber laminate floating floor and carpet throughout

## Land Key Features:

- Generous allotment size
- Fully titled
- Ready to build your dream home on
- Elevated position
- Beautiful views over Newenham
- Take advantage of the natural contours of this land
- Split level house designs available for this block
- Moments from Newenham linear park & creek

HOUSE PRICE

**\$204,664**

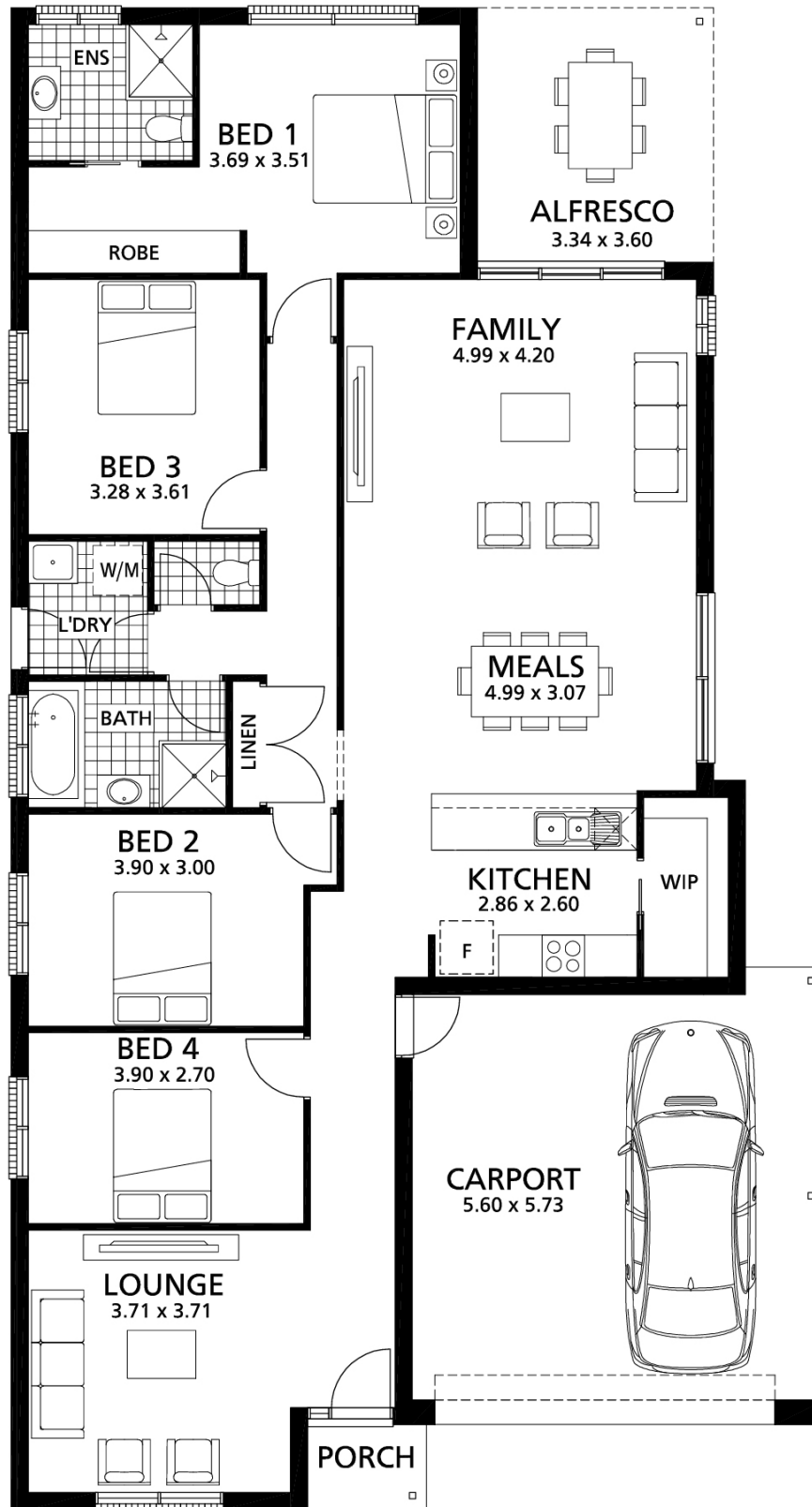
LAND PRICE

**\$233,850**

Contact: Ben Walker [ben@newenham.com.au](mailto:ben@newenham.com.au)  
0429 107 497 RLA 63301

Visit our Sales & Info Centre:  
164 Flaxley Rd Mt. Barker

Open 12 – 5pm daily  
[newenham.com.au](http://newenham.com.au)



© 2017 Rivergum Homes Pty Ltd. Subject to availability. All plans are copyright. All images and plans shown are for illustrative purposes only. Floorplans will vary according to façade type and all sizes are approximate. Rivergum Homes reserves the right to alter designs and pricing without notice. All prices are GST, council approval and energy efficiency assessment. Conditions apply. E&OE. SA Builder's Licence GL113681. ABN 70 065 466 337. Land component sale by Sexton Glover Watts RLA 63301. \*Refer website for T&C's †Visit [www.revenuesa.gov.au](http://www.revenuesa.gov.au) to check your eligibility for the First Home Owner Grant.

Contact: Ben Walker [ben@newenham.com.au](mailto:ben@newenham.com.au)  
0429 107 497 RLA 63301

Visit our Sales & Info Centre:  
164 Flaxley Rd Mt. Barker

Open 12 – 5pm daily  
[newenham.com.au](http://newenham.com.au)