

Tusmore

Lot 86, Burton Street



\$471,455



LAND SIZE
626m²

LOT FRONTAGE
19.2m

LOT DEPTH
32m

House Key Features:

- Generous site costs & footings allowance (FIXED before contract)
- 10 facades available with render
- Remote panel lift garage door, 2 external lights to front pillars
- 2.74m (9 foot) ceilings, 25 degree pitched roof, 600mm eaves
- Quality fixtures throughout; 900mm SS european appliances
- Upgraded laundry joinery, fridge overhead cupboards
- Timber finish floating floor and carpet throughout
- LED downlights to living areas.
- Full stormwater system, NBN wiring pack.
- Samsung ducted RC heating & cooling system

Land Key Features:

- Fully titled
- Ready to build your dream home on now
- Prime corner allotment
- House designs available for this block
- Adjacent to Kidman Reserve
- Short walk to the Newenham linear park & creek
- Easy 2km walk to Mounter Barker

HOUSE PRICE

\$241,705

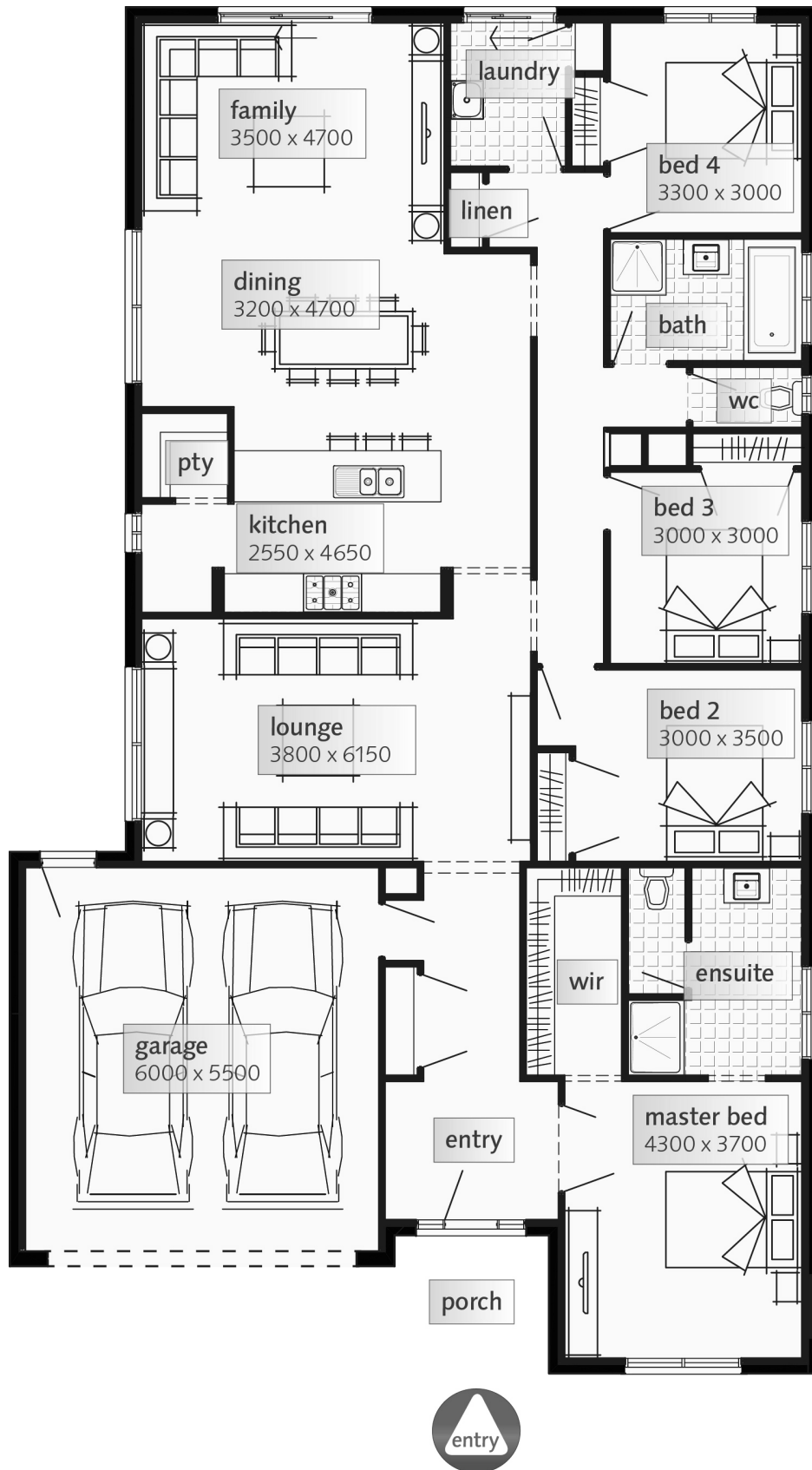
LAND PRICE

\$229,750

Contact: Ben Walker ben@newenham.com.au
0429 107 497 RLA 63301

Visit our Sales & Info Centre:
164 Flaxley Rd Mt. Barker

Open 12 – 5pm daily
newenham.com.au



Disclaimer: This email and any files transmitted with it are confidential and intended solely for the use of the individual or entity to whom they are addressed. If you have received this email in error, please notify the sender and delete this e-mail from your system. If you are not the intended recipient you are notified that disclosing, copying, distributing or taking any action in reliance on the contents of this information is strictly prohibited. No representation is made that this email or its attachments are free of errors, virus, interception or interference. The company accepts no liability for any damage caused by any virus transmitted. Any views or opinions are solely those of the author and do not necessarily represent those of the Company.

Contact: Ben Walker ben@newenham.com.au
0429 107 497 RLA 63301

Visit our Sales & Info Centre:
164 Flaxley Rd Mt. Barker

Open 12 – 5pm daily
newenham.com.au